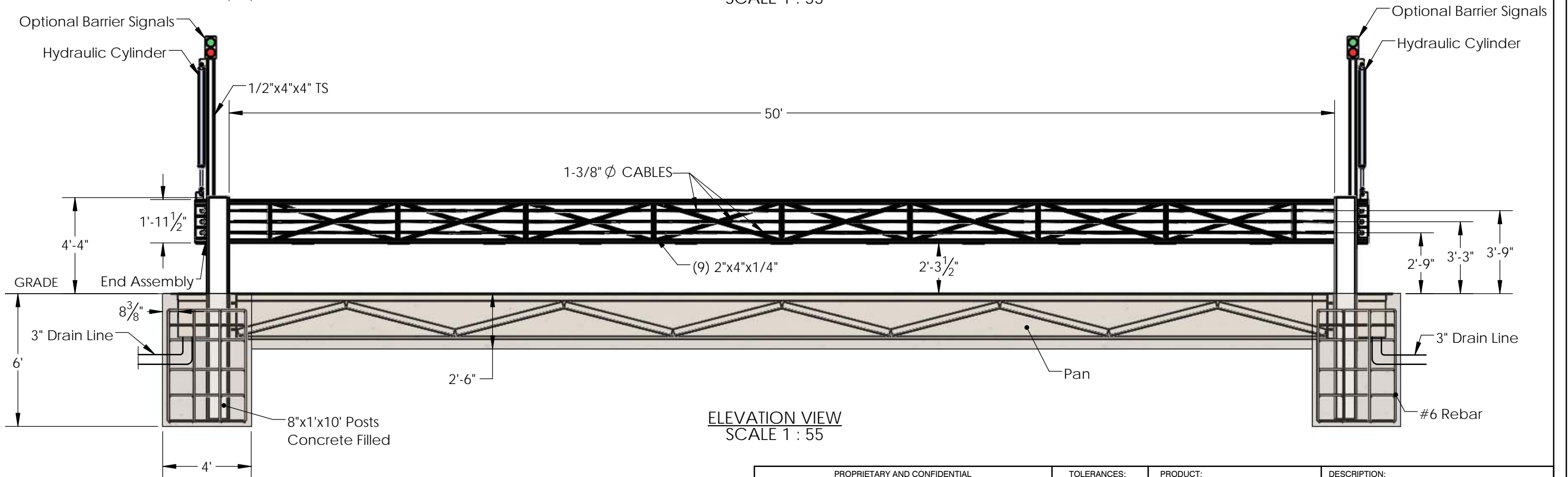
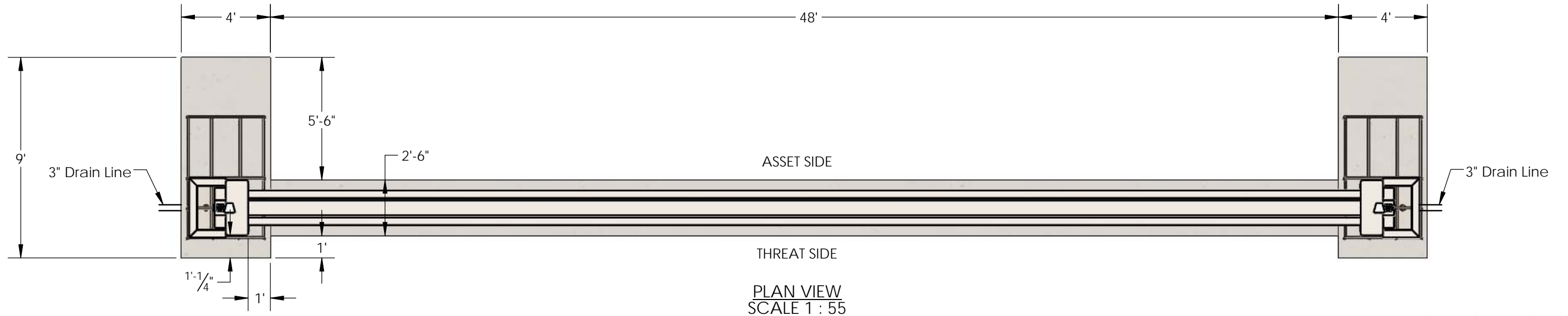



GENERAL NOTES

1. Trough and buttress posts galvanized per ASTM A-123. Blocking beam wet painted per customer specification.
2. All concrete shall be per specification; minimum 4,000 PSI.
3. Foundation reinforced with #6 rebar.
4. The foundation dimensions shown represent the minimum requirements for the G-3000 Vertical Lift Barrier.
5. All welded joints by welders certified in accordance with AWS D1.1 welding code.
6. The G-3052 Vertical Lift Barrier is tested and certified to ASTM F-2656-07 test specifications for a M-50 P2 rating.



PROPRIETARY AND CONFIDENTIAL THE INFORMATION CONTAINED IN THIS DRAWING IS THE SOLE PROPERTY OF GIBRALTAR. ANY REPRODUCTION IN PART OR AS A WHOLE WITHOUT THE WRITTEN PERMISSION OF GIBRALTAR IS PROHIBITED.			TOLERANCES: DIMS > 1" ± 1/8" DIMS ≤ 1" ± 1/16" ANGLES ± 5°		PRODUCT: G-3052 M50 P2 Vertical Lift Barrier		DESCRIPTION: G-3052 50ft Vertical Barrier Standard Layout	
REV #	DESCRIPTION:	DRAWN BY:	APPD BY:	DATE:				
1	Approved for Distribution	SW	JP	10-27-17				
0	Issued for Approval	SW	JP	10-27-17	PROJECT: STANDARD			
					SCALE:	SHEET:	DWG #	
					1:55	1 OF 1	G3-50-SL01	