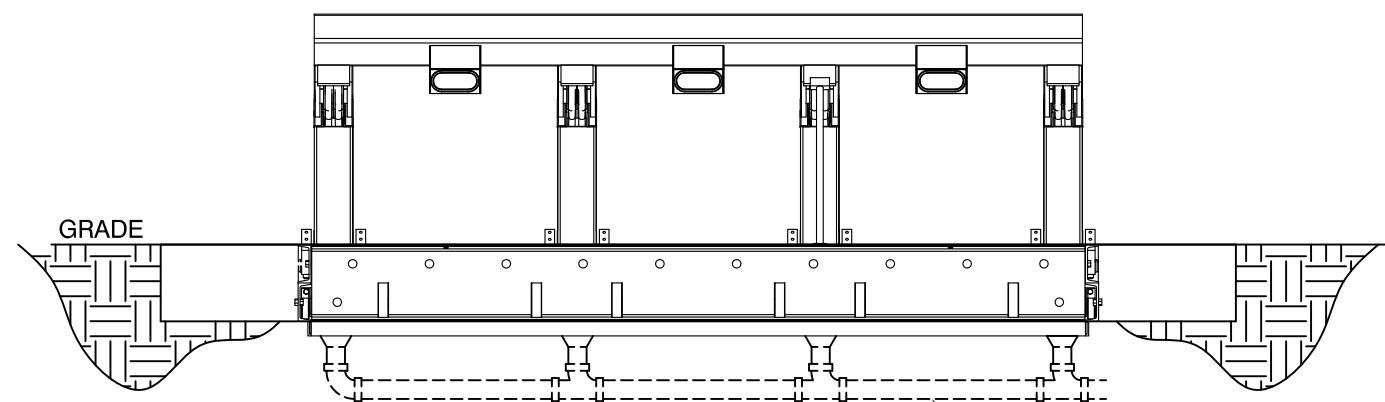


Drain Line Locations Plan View
Scale 1:30



Drain Line Locations Elevation
Scale 1:30

Drainage Notes:

1. The G-2000 Series Wedge Barrier is designed to operate with total submersion in water, it is a good practice to keep subgrade areas of the barrier free from submersion. This can be accomplished in the following ways:
 - 1.1. The installer shall provide the barrier with a drain line plumbed to a storm drain, drainage field, or a sump pump (if needed).
 - 1.2. There are eight 3" diameter holes in the bottom drain pan of the barrier. These should be plumbed based on the elevation of the roadway.
 - 1.1.1. Plumb either the front four drain holes, or the rear four drain holes. Plumb the holes on the downhill side depending on the slope of the roadway. Cap unused holes.
 - 1.2. When the barrier is installed on level grade or a down hill slope (sloped to the asset side), raise the front of the barrier 1" above grade and slope the foundation to the roadway away from the barrier. Raise the back of the barrier 1/2" above grade and slope the foundation away from the barrier. Plumb the rear four holes.
 - 1.3. When the barrier is installed on an uphill slope (sloped to the asset side), raise the entire barrier 1" above grade and slope the foundation to the roadway away from the barrier. Plumb the front four drains.

Horizontal Drainage Port Dimensions

Barrier Blocking Width	A	B	C
G-2008 (8ft)	2'-9 1/2"	5'-3 1/2"	7'-9 1/4"
G-2009 (9ft)	3'-1 1/2"	5'-11 1/2"	8'-9 1/4"
G-2010 (10ft)	3'-5 1/2"	6'-7 1/2"	9'-9 1/4"
G-2012 (12ft)	4'-1 1/2"	7'-11 1/2"	11'-9 1/4"
G-2014.5 (14ft 6in)	4'-11 1/2"	9'-7 1/2"	14'-3 1/4"

PROPRIETARY AND CONFIDENTIAL THE INFORMATION CONTAINED IN THIS DRAWING IS THE SOLE PROPERTY OF GIBRALTAR. ANY REPRODUCTION IN PART OR AS A WHOLE WITHOUT THE WRITTEN PERMISSION OF GIBRALTAR IS PROHIBITED.					PRODUCT: G-2000 Series Wedge Barrier		DESCRIPTION: Wedge Barrier Drain Holes (Domestic)		
REV #	DESCRIPTION:	DRAWN BY:	APPD BY:	DATE:					
1	Approved For Distribution	JP	BN	11-18-16					
0	Issued for review	JP	JC	11-18-16	PROJECT: STANDARD				
					SCALE:	SHEET:	DWG #		
					NTS	1 OF 1	G2-DH-D		